

RESPONSE ABILITY

responding to the grace of God

Genesis 3:1-24

Adult Discipleship Goal

To increase our desire to know Jesus
and to grow stronger in living
WITH, LIKE and FOR Him.

Jesus follower



this is my story



Jesus follower

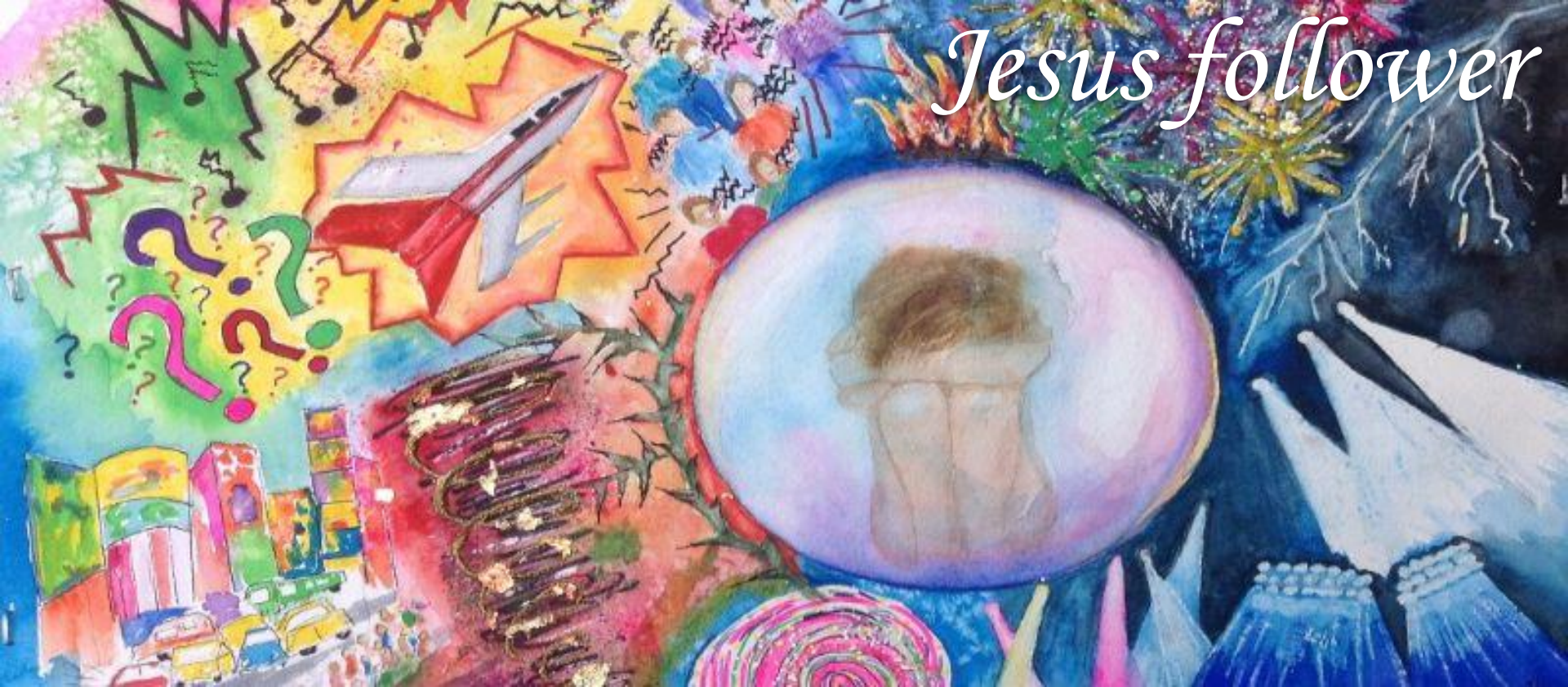
this is my story



Jesus follower

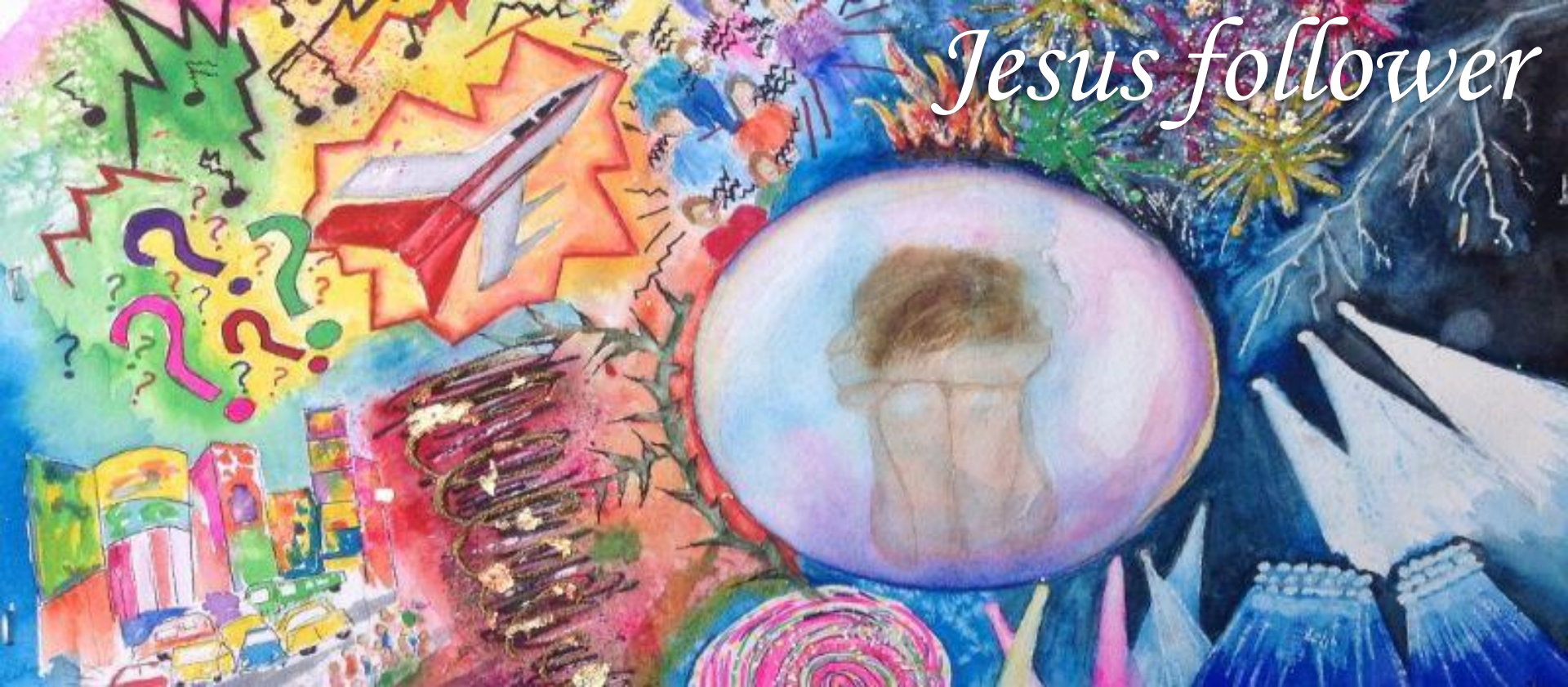
this is my story

Jesus follower



how the enemy tempts me

Jesus follower



how do I respond?

Jesus follower



the consequences of my response

Jesus follower

1. Blaming others

2. Comparing to others

3. Focusing on others

4. Judging others

how I deflect my response-ability

Jesus follower

A close-up photograph of a person's hand, wearing a purple long-sleeved shirt, holding a wooden block. The hand is positioned over a dark surface where a row of several other wooden blocks is laid out. The lighting is soft, highlighting the texture of the wood and the skin.

how do I accept my response-ability?

Jesus follower



how do I accept my response-ability?

A close-up photograph of a person wearing white, textured robes, kneeling on a sandy surface. The person's right hand is resting on the sand, tracing a footprint. The lighting is warm, suggesting an outdoor setting. The text 'Jesus follower' is overlaid in the top right corner in a white, cursive font.

Jesus follower

'what did you do with the life I gave you?'

Jesus follower



Next Week's Message: Taking Response-Ability!
Genesis 4, 2 Peter 1:1-11

Lord Jesus, I am ultimately responsible
for my own choices.

Help me to stop deflecting, and admit
my desperate need for help.

I need You Lord, I surrender my
life to Your mercy and help. Amen.